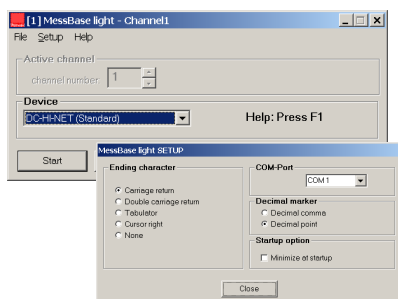


Software Tools

MessBase light (Single User License) **DC-HI-NET logging software** **20-38-1000**

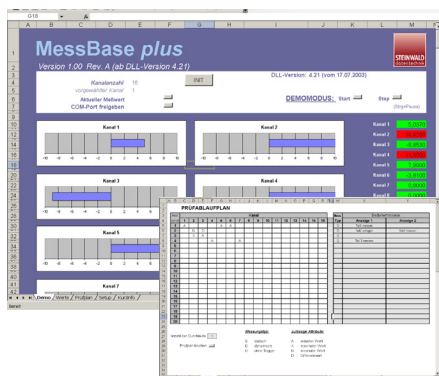


Transfers measurement values of a DC-HI-NET interface device connected to the PC-COM interface and sends the values via simulated keystrokes to the active window (application).

The program allows the setting of:

- COM port for interface connection
- Decimal marker
- Measurement ending character
- Measurement channels
- Timer

MessBase plus **DC-HI-NET logging software** **20-38-1010**



Example sheet for the transfer of measurement values from DC-HI-NET interface devices to Microsoft Excel®

Functions:

- Graphical and numerical online measurement value display
- Measurement value storage
- Tolerance monitoring
- Static and dynamic measurement
- Measurement cycle planning
- Channel connections
- Multi-position measurement including zeroing and offset function

DCDemo32 **Diagnostics software** **20-30-9920**

Software for system test independent from the application software (real-time presentation of measured values on PC monitor). For MS-Windows.

Download: <https://software.steinwald.com/DCDemo32.exe>

Windows driver DLL **DC-HI-NET driver software** **20-30-9953**

Software for reading measured values from DC-HI-NET interfaces into Windows® 7 / 8 / 10 (32 Bit) applications. DC-HI-NET device driver in form of a 32 bit DLL (**64 bit version on request**). Incl. manual and sample programs.